



Daniel K. Inouye Highway Extension Project



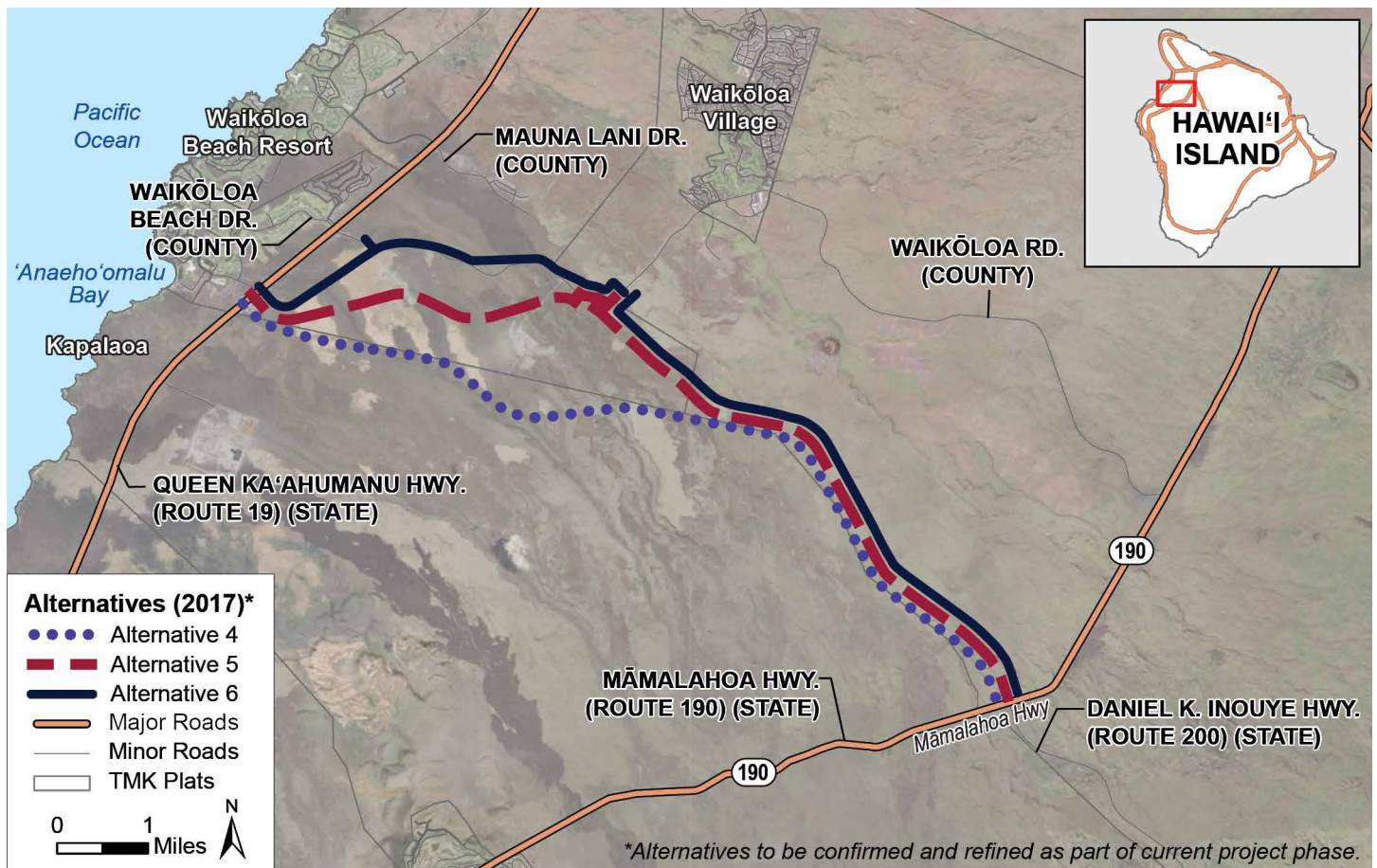
Spring 2026

About the Project

The Hawaii Department of Transportation (HDOT) and the Federal Highway Administration (FHWA) are proposing the final segment to extend the Daniel K. Inouye Highway (State Route [SR] 200, formerly known as Saddle Road) from the current western terminus at Māmalahoa Highway (SR 190) to the Queen Ka’ahumanu Highway (SR 19) in South Kohala District, Hawai’i Island. The Daniel K. Inouye Highway Extension will provide a critical cross-island route, improving access to airports (Kona International Airport and Hilo International Airport), state harbors (Kawaihae and Hilo), beaches and resorts (South Kohala and Kona), and major population centers (Hilo, Waimea, Waikōloa Village, and Kailua-Kona).

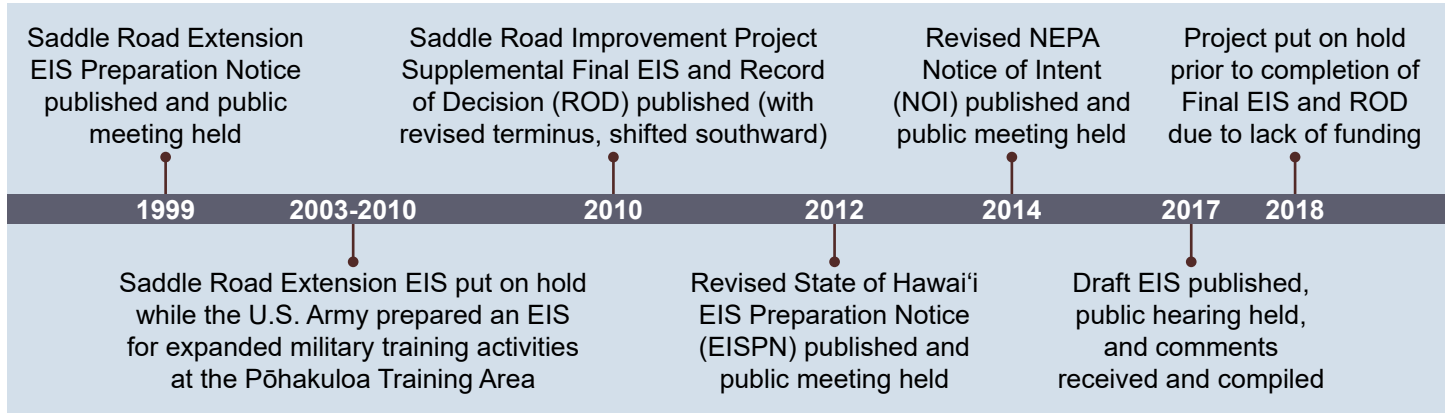
The study area for the project is a 10.5-mile corridor extending in an east-west direction. The 2017 Draft Environmental Impact Statement (EIS) included detailed analysis of three proposed alternative routes, which will serve as the starting point for alternative refinements and additional analysis for this project phase. Updates regarding the alternative refinement process and specific alternative details will be available as the project progresses.

Overall, the project aims to enhance travel efficiency between East and West Hawai’i; support commercial truck and military routes between Kawaihae and the Pōhakuloa Training Area; and improve safety for all users.



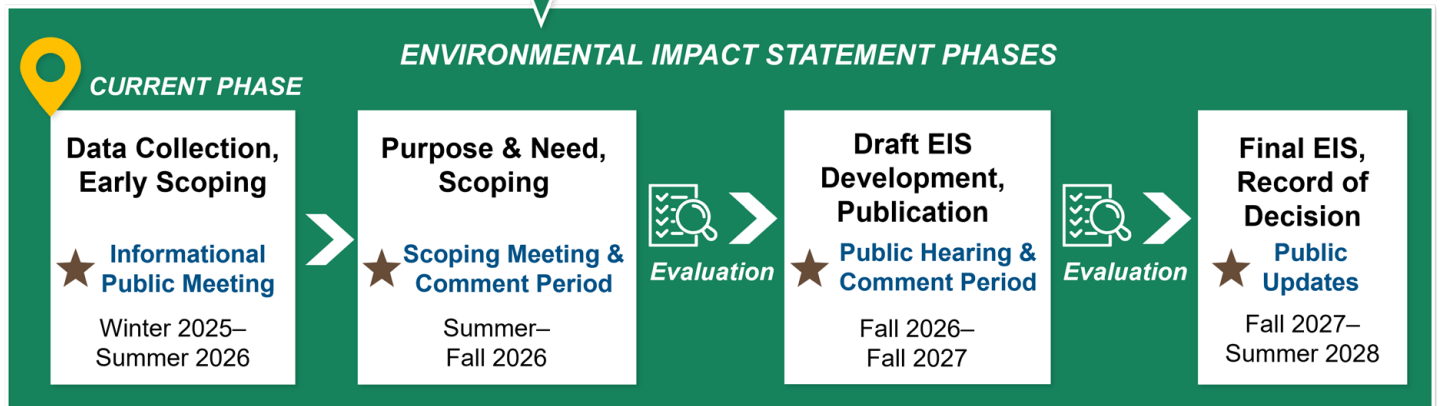
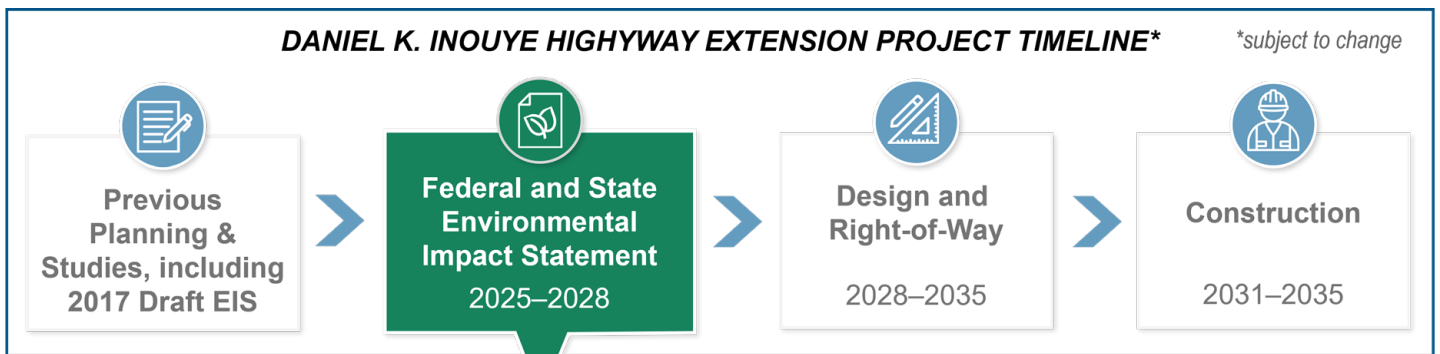
Project History

The current phase of the project will build upon a robust history of planning, design, environmental analysis, and public, agency, and stakeholder input dating back to 1999:



Current Phase

HDOT is currently reinitiating the project, due to the availability of additional federal funding sources. The project will include preparation of updated EISs compliant with the National Environmental Policy Act (NEPA) and Hawai'i Environmental Policy Act (HEPA). These documents will reflect alternative refinements and updated environmental analyses that build upon and update the information published in the 2017 Draft EIS.



★ Opportunities for Public Engagement

How to Get Involved and Stay in Touch with Us!

- Visit the project website at danielkinouyehwyextension.com for updates and information about upcoming public meetings
- Sign up for our email distribution list
- Contact us at info@danielkinouyehwyextension.com

