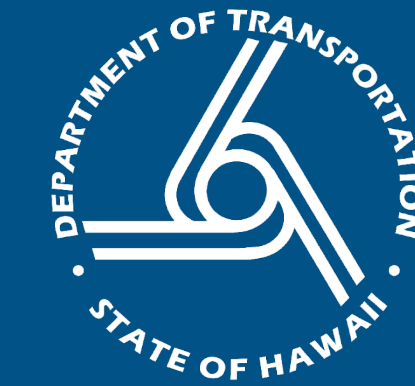


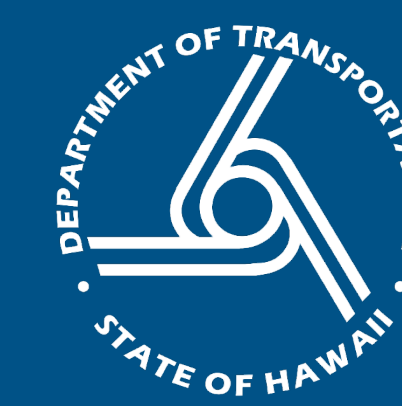
# Welcome

Daniel K. Inouye Highway Extension Project  
Informational Open House

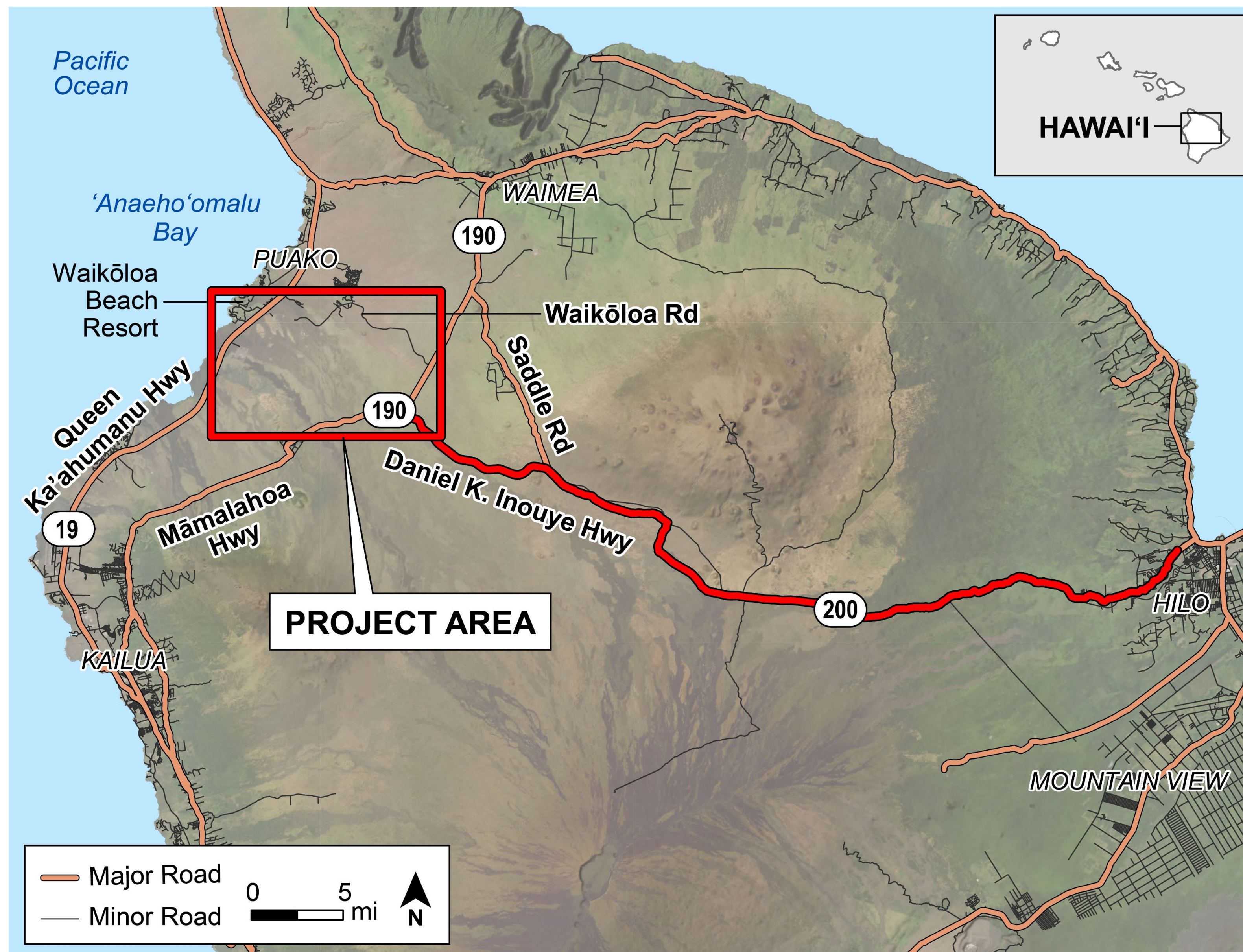
May 20, 2026



# What is the Project?



Proposed final segment of Daniel K. Inouye Highway from Māmalahoa Highway (SR 190) to the Queen Kaʻahumanu Highway (SR 19), providing critical cross-island connection between East and West Hawaiʻi.



## Draft Project Need (from 2017 Draft EIS)

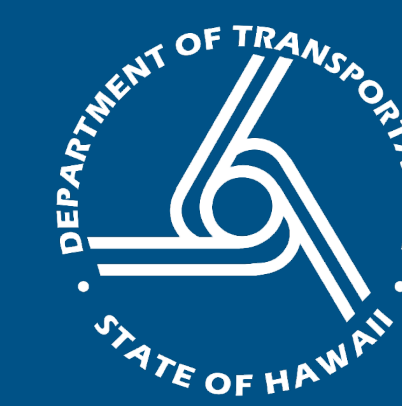
- Need for meeting general cross-island traffic demand between Māmalahoa Highway and Queen Kaʻahumanu Highway.
- Need for improved arterial connection between existing Daniel K. Inouye Highway terminus and Queen Kaʻahumanu Highway.
- Need for appropriate route for commercial and military traffic.



## Draft Project Purpose (from 2017 Draft EIS)

- Improve the efficiency and operational level of traffic movement between East Hawaiʻi and West Hawaiʻi.
- Improve safety.
- Support special needs of commercial truck traffic and military traffic.

# Project Background

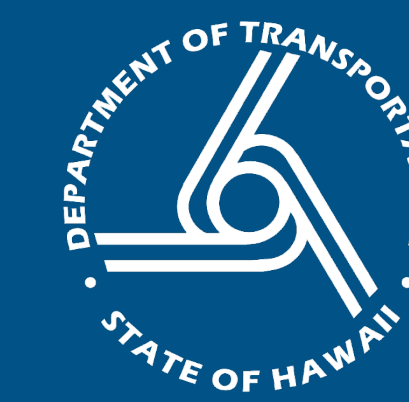


Daniel K. Inouye Highway Extension Project

- 1999 ○ Saddle Road Extension EIS Preparation Notice published and public meeting held
- 2003–2010 ○ Saddle Road Extension EIS put on hold while the U.S. Army prepared an EIS for expanded military training activities at the Pōhakuloa Training Area
- 2010 ○ Saddle Road Improvement Project Supplemental Final EIS and Record of Decision (ROD) published (with revised terminus, shifted southward)
- 2012 ○ Revised State of Hawai'i EIS Preparation Notice (EISPN) published and public meeting held
- 2014 ○ Revised NEPA Notice of Intent (NOI) published and public meeting held
- 2017 ○ Draft EIS published, public hearing held, and comments received and compiled
- 2018 ○ Project put on hold prior to completion of Final EIS and ROD due to lack of funding
- 2025–2026 ○ Reinitiate project due to availability of additional federal funding; partnering with U.S. Army to seek defense funding (anticipate available in 2029 for construction)

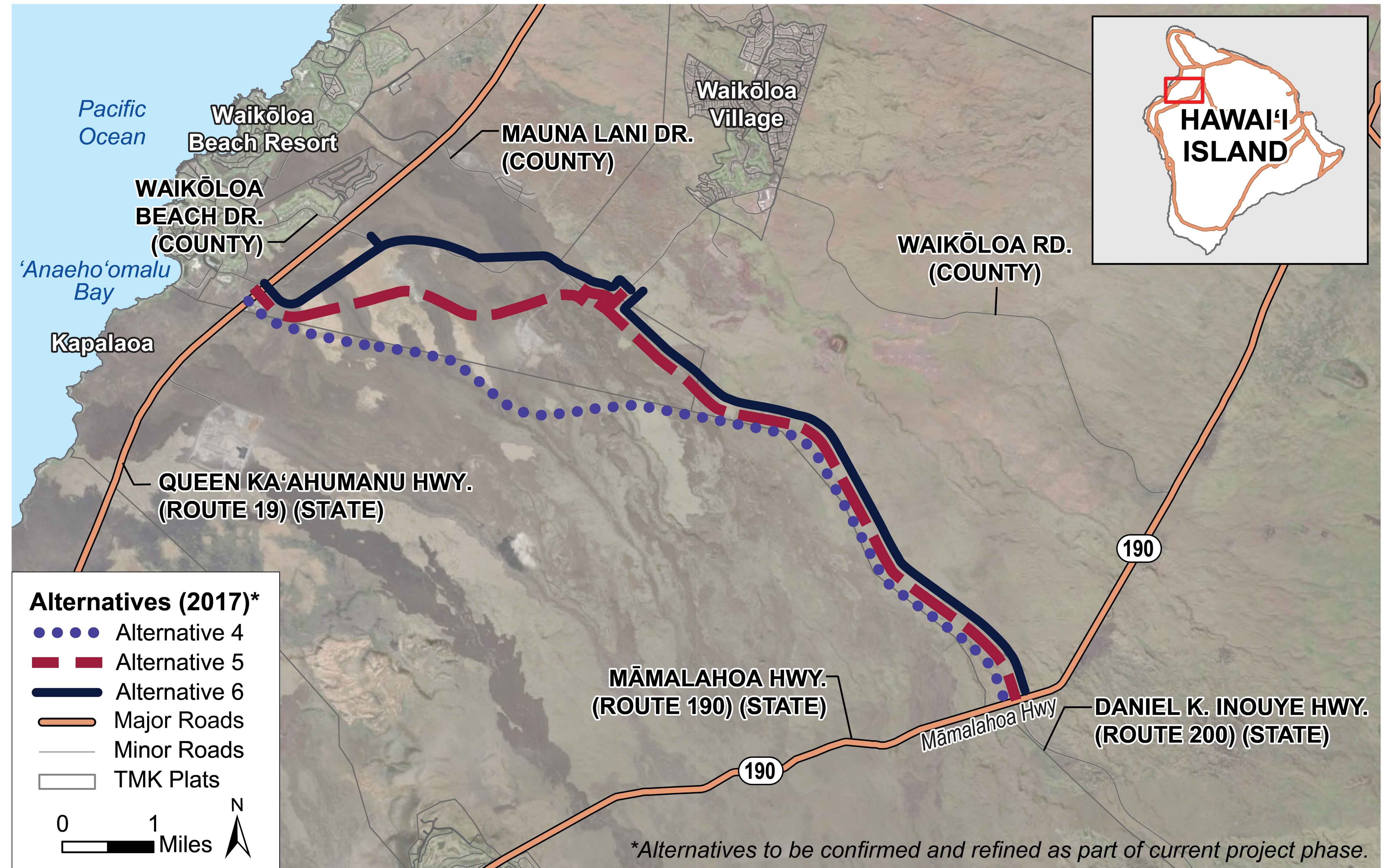


# 2017 Draft Environmental Impact Statement (EIS)

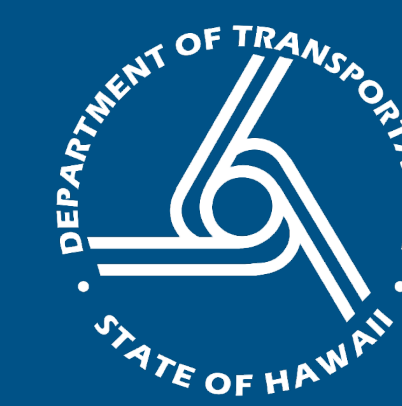


Daniel K. Inouye Highway Extension Project

- ✓ Draft EIS completed in compliance with National Environmental Policy Act (NEPA) and Hawai'i Environmental Policy Act (HEPA)
- ✓ Initially analyzed: 11 highway alignments, transportation systems management/travel demand management (TSM/TDM), mass transit, and no-action alternatives
- ✓ Alternatives 4, 5, 6 advanced for detailed analysis
- ✓ 2017 Draft EIS Studies:
  - Waters of the U.S. and Drainage Calculations
  - Botanical Report
  - Vertebrate Fauna Report
  - Archaeological Survey
  - Traffic Report
  - Noise Report
  - Air Quality Report



# Current Environmental Phase



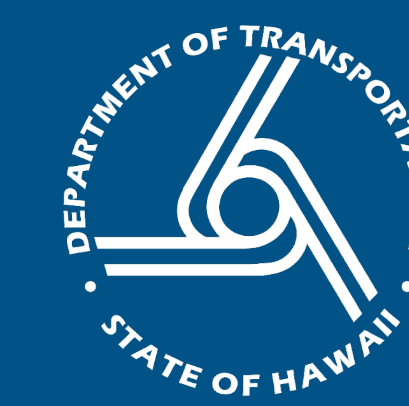
Daniel K. Inouye Highway Extension Project

- **Due to lapse in time, need to revisit and update previous environmental analysis**
- **Formally initiate Environmental Impact Statement (EIS) process late summer/fall 2026**



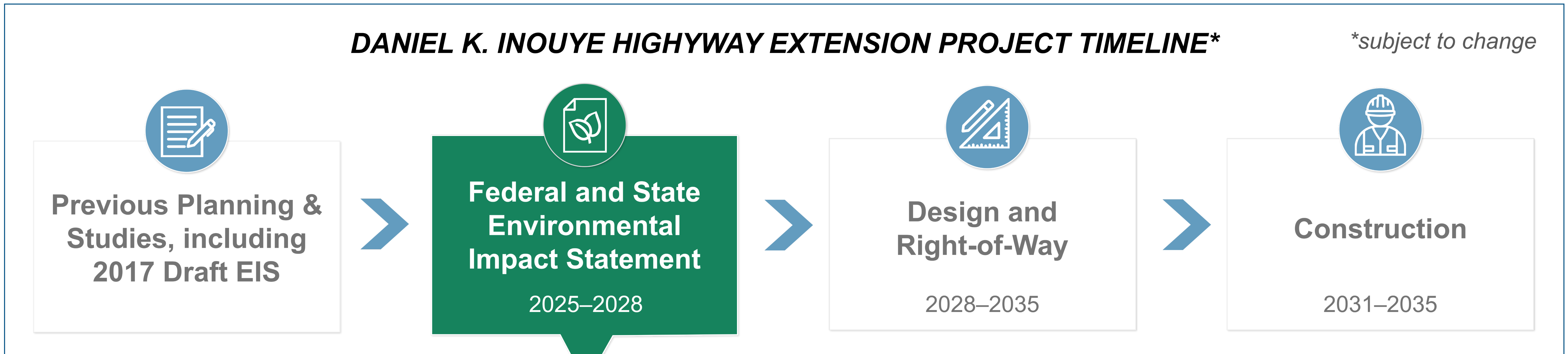
- **Confirm, refine, and update 2017 Draft EIS information and findings:**
  - Purpose and need, public scoping and comments
  - Confirm and refine alternatives (update preliminary design, as needed)
  - Review/update environmental resources and document potential impacts and mitigation
  - Formal agency consultation
  - Formal Section 106 and Chapter 6E cultural resources consultation
  - Ongoing stakeholder and public coordination
  - Prepare separate NEPA EIS and HEPA EIS to meet federal and state requirements
  - Public review and comment on Draft EISs
  - Prepare Final EISs and Record of Decision (ROD)

# Project Timeline



## DANIEL K. INOUYE HIGHWAY EXTENSION PROJECT TIMELINE\*

\*subject to change



## ENVIRONMENTAL IMPACT STATEMENT PHASES



### CURRENT PHASE



★ Opportunities for Public Engagement

# We Want to Hear from You!



Visit our website at [danielkinouyehwyextension.com](http://danielkinouyehwyextension.com) for more information and project updates.



Share your comments using the form available tonight or on the website.



Scan Me

