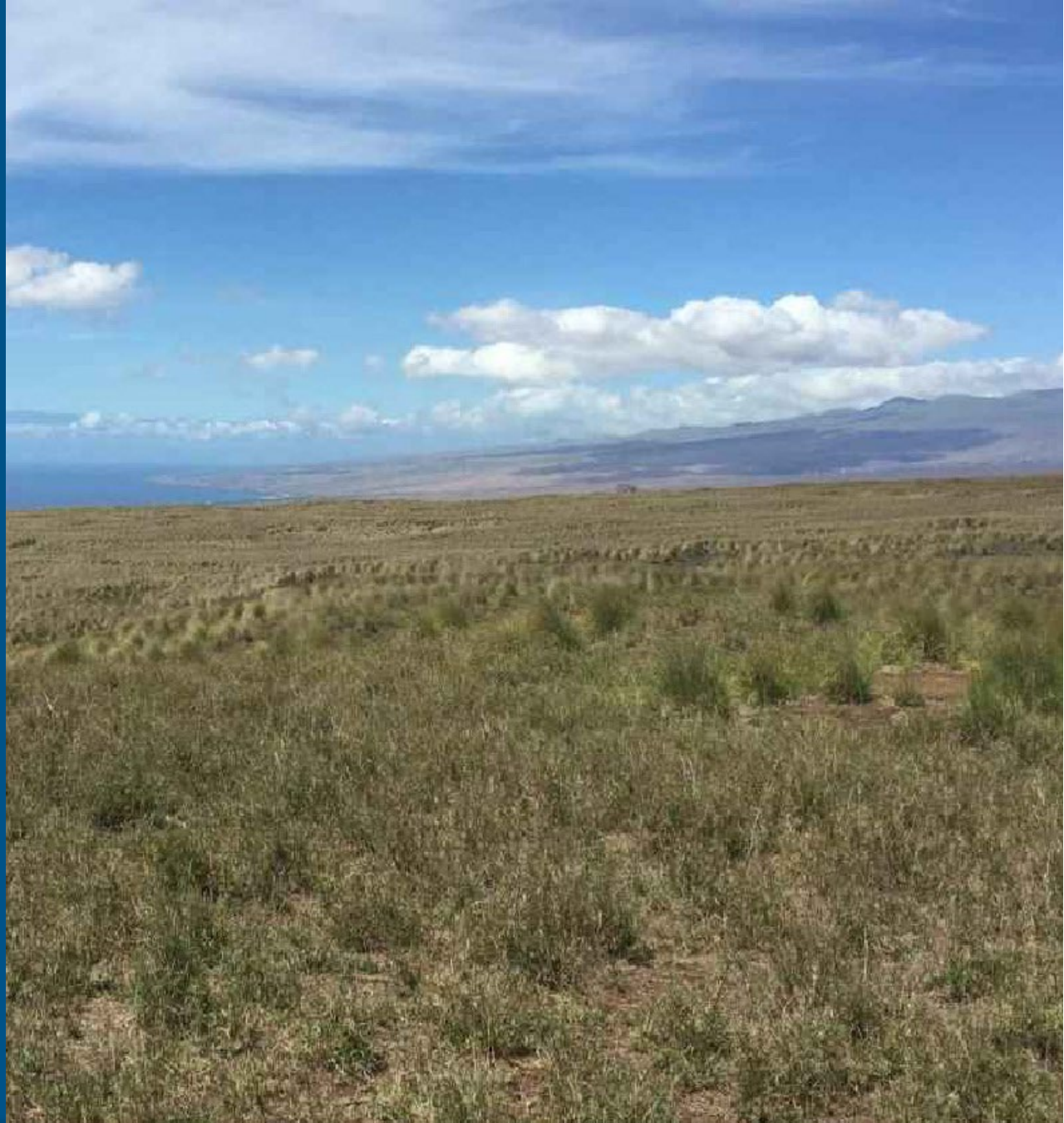


Daniel K. Inouye Highway Extension Project

Informational Open House

May 20, 2026



Agenda

1. Open House
2. Welcome / Introductions *(10 min.)*
3. Project Presentation *(20 min.)*
4. Q&A *(30 min.)*



Meeting Purpose



Reintroduce the project – what is it, why is it needed, and what has led us to today?



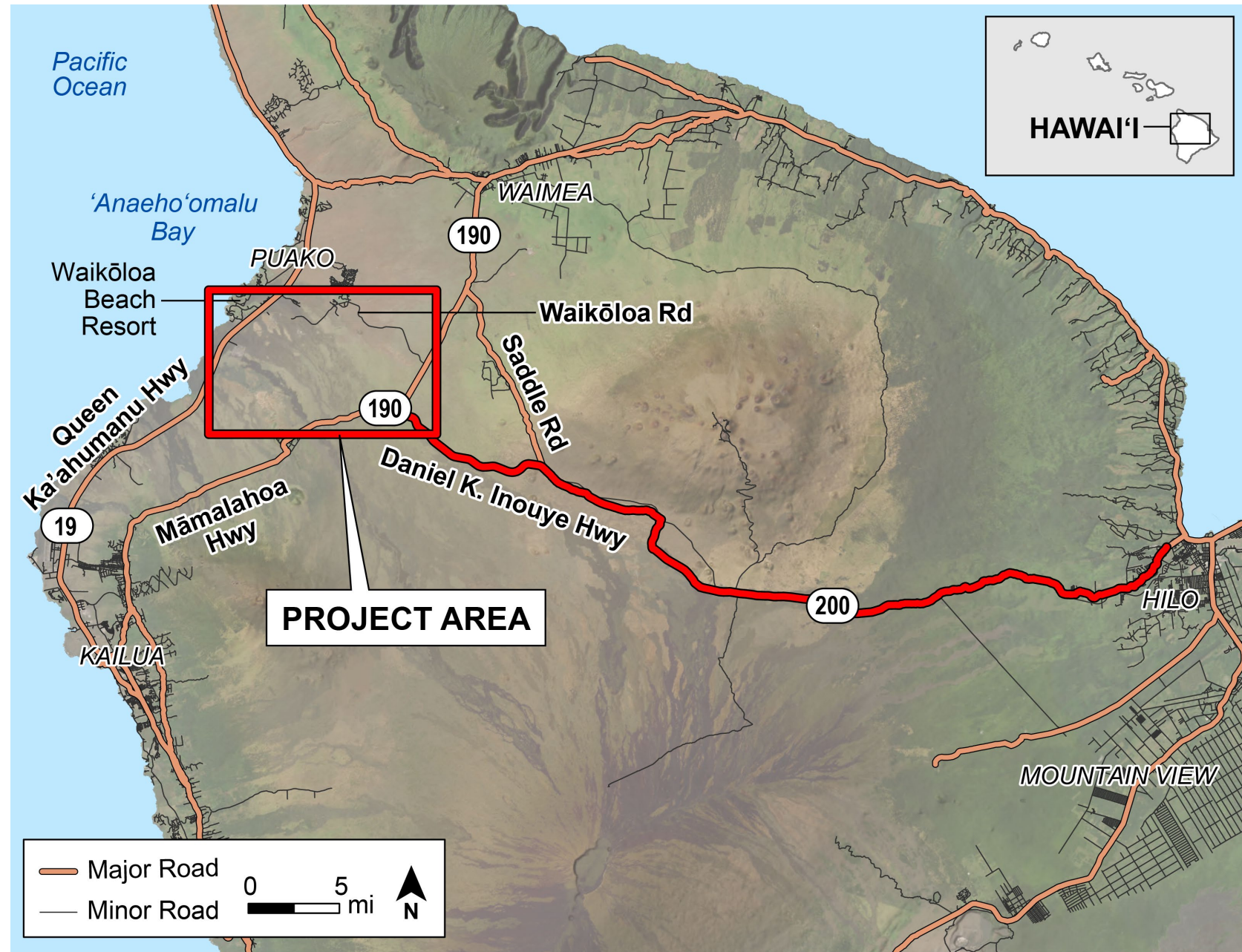
Present background information on previous 2017 Draft Environmental Impact Statement (EIS) and process moving forward.



Answer questions about the project.

What is the Project?

Proposed final segment of Daniel K. Inouye Highway from Māmalahoa Highway (SR 190) to the Queen Kaʻahumanu Highway (SR 19), providing critical cross-island connection between East and West Hawaiʻi.



Project Background

- 1999 ○ Saddle Road Extension EIS Preparation Notice (EISPN) published and public meeting held
- 2003-2010 ○ Saddle Road Extension EIS put on hold while the U.S. Army prepared an EIS for expanded military training activities at the Pōhakuloa Training Area
- 2010 ○ Saddle Road Improvement Project Supplemental Final EIS and Record of Decision (ROD) published (with revised terminus, shifted southward)
- 2012 ○ Revised State of Hawai'i EISPN published and public meeting held
- 2014 ○ Revised NEPA Notice of Intent (NOI) published and public meeting held
- 2017 ○ Draft EIS published, public hearing held, and comments received and compiled
- 2018 ○ Project put on hold prior to completion of Final EIS and ROD due to lack of funding
- 2025-2026 ○ Reinitiate project due to availability of additional federal funding; partnering with U.S. Army to seek defense funding (anticipate available in 2029 for construction)



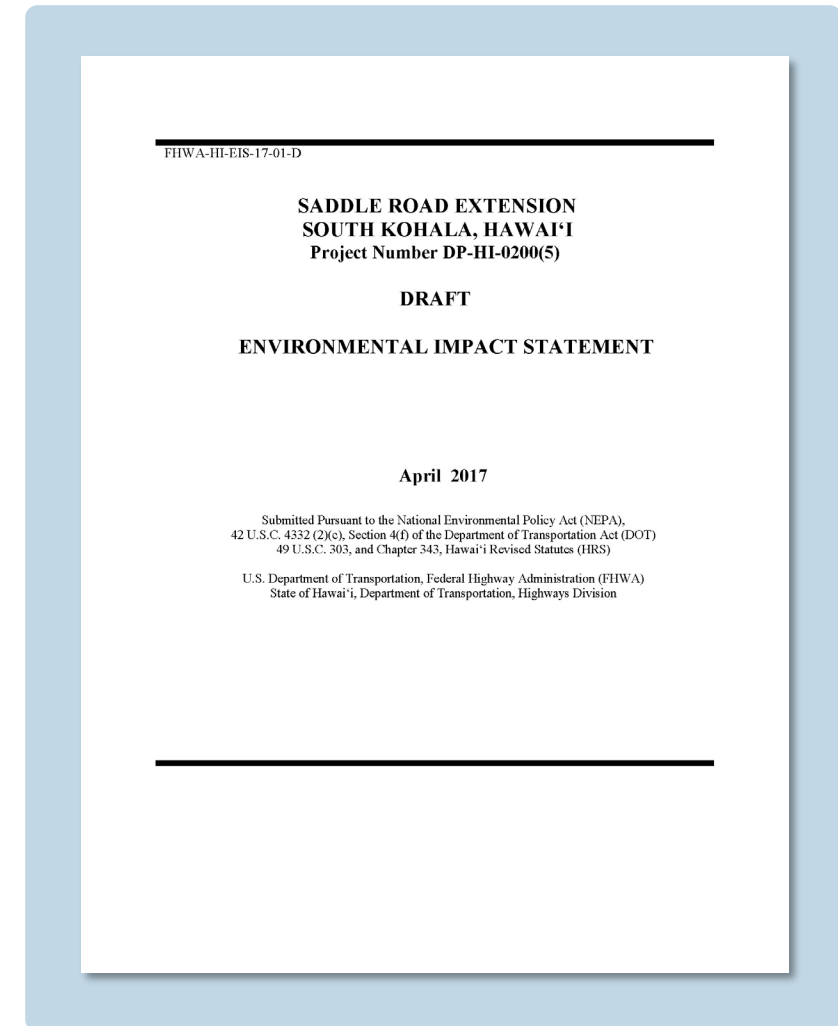


Overarching Project Purpose

- Improve the efficiency and operational level of traffic movement between East Hawai'i and West Hawai'i.
- Improve safety.
- Support special needs of commercial truck traffic and military traffic.

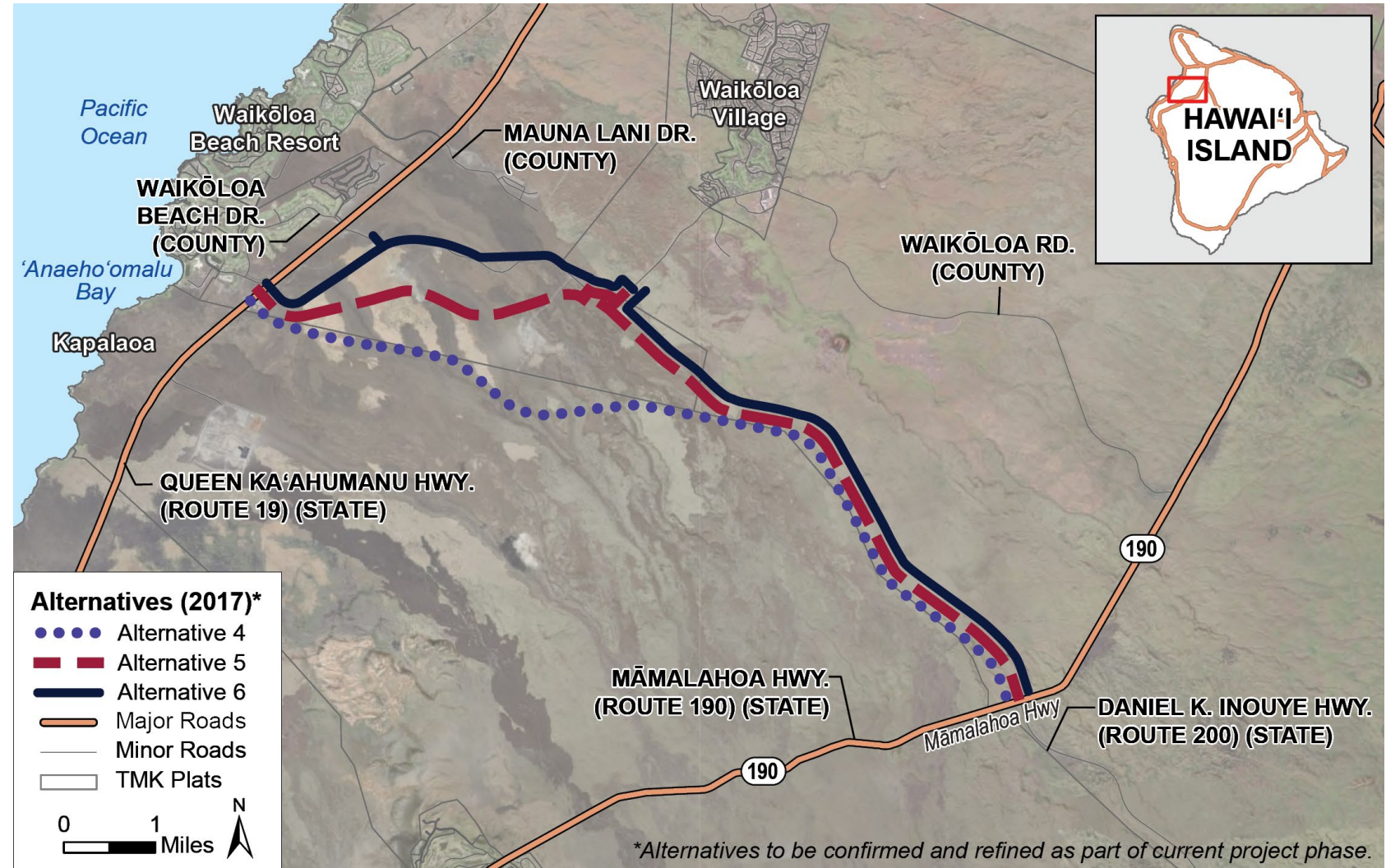
2017 Draft Environmental Impact Statement

- Single Draft EIS completed in compliance with National Environmental Policy Act (NEPA) and Hawai'i Environmental Policy Act (HEPA)
- 2017 Draft EIS Studies:
 - Waters of the U.S. and Drainage Calculations
 - Botanical Report
 - Vertebrate Fauna Report
 - Archaeological Survey
 - Traffic Report
 - Noise Report
 - Air Quality Report



2017 Draft Environmental Impact Statement

- Initially analyzed: 11 highway alignments, transportation systems management/travel demand management (TSM/TDM), mass transit, and no-action alternatives
- Alternatives 4, 5, 6 advanced for detailed analysis



Current Environmental Phase

- Due to lapse in time, need to revisit and update previous environmental analysis
- Formally initiate Environmental Impact Statement (EIS) process late summer/fall 2026

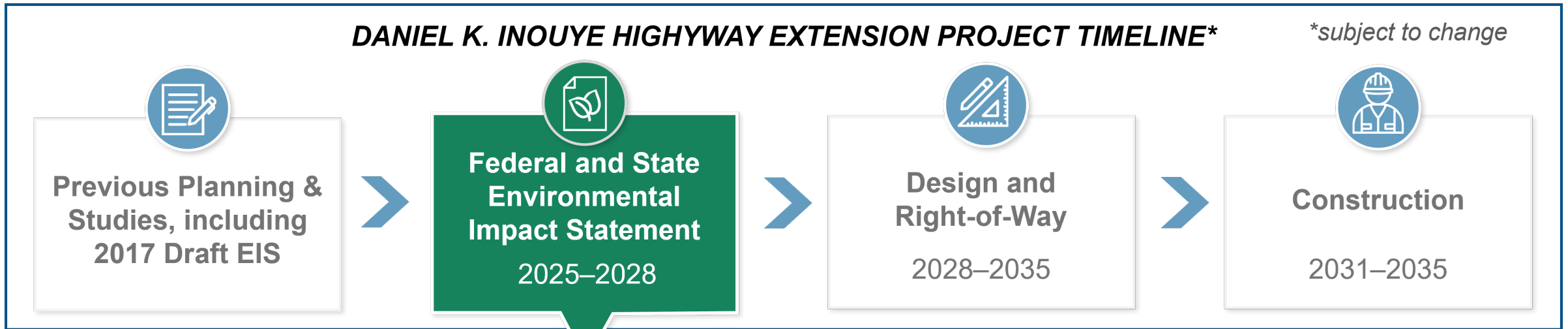


- Confirm, refine, and update 2017 Draft EIS information and findings:
 - Purpose and need, public scoping and comments
 - Confirm and refine alternatives (update preliminary design, as needed)
 - Review/update environmental resources and document potential impacts and mitigation
 - Formal agency consultation
 - Formal Section 106 and Chapter 6E cultural resources consultation
 - Ongoing stakeholder and public updates and coordination
 - Prepare separate National Environmental Policy Act (NEPA) EIS and Hawai'i Environmental Policy Act (HEPA) EIS to meet federal and state requirements
 - Public review and comment on Draft EISs
 - Prepare Final EISs and Record of Decision (ROD)

Timeline

DANIEL K. INOUE HIGHWAY EXTENSION PROJECT TIMELINE*

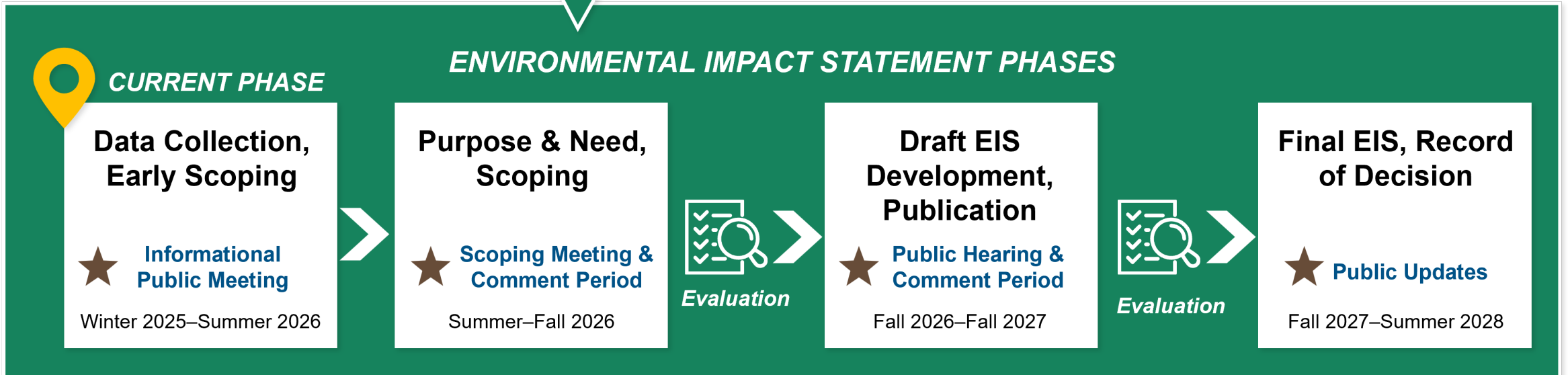
*subject to change



ENVIRONMENTAL IMPACT STATEMENT PHASES

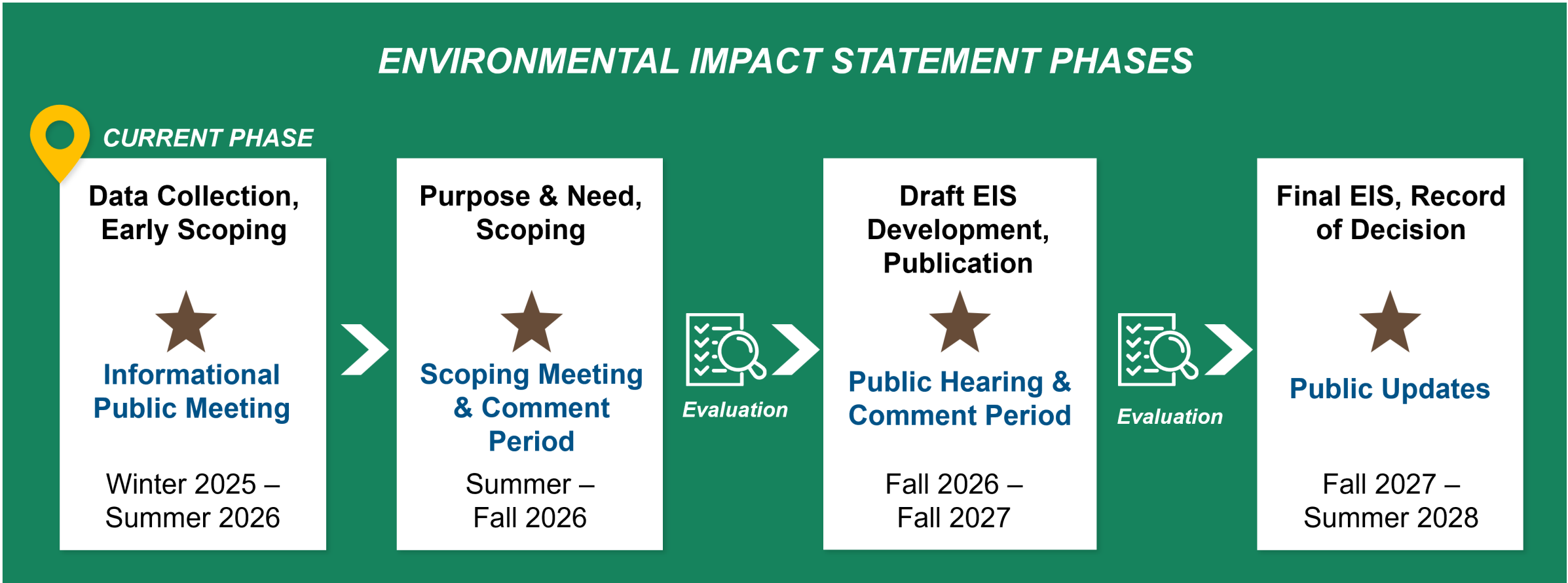


CURRENT PHASE



★ Opportunities for Public Engagement

Opportunities for Public Engagement



★ Opportunities for Public Engagement

Let's Talk Story



We want to hear from you. Share your thoughts on restarting the project.



After the meeting, visit our website at danielkinouyehwyextension.com for more information and project updates.



Share your comments using the form available tonight or on the website.



Scan Me





Mahalo! Q&A

